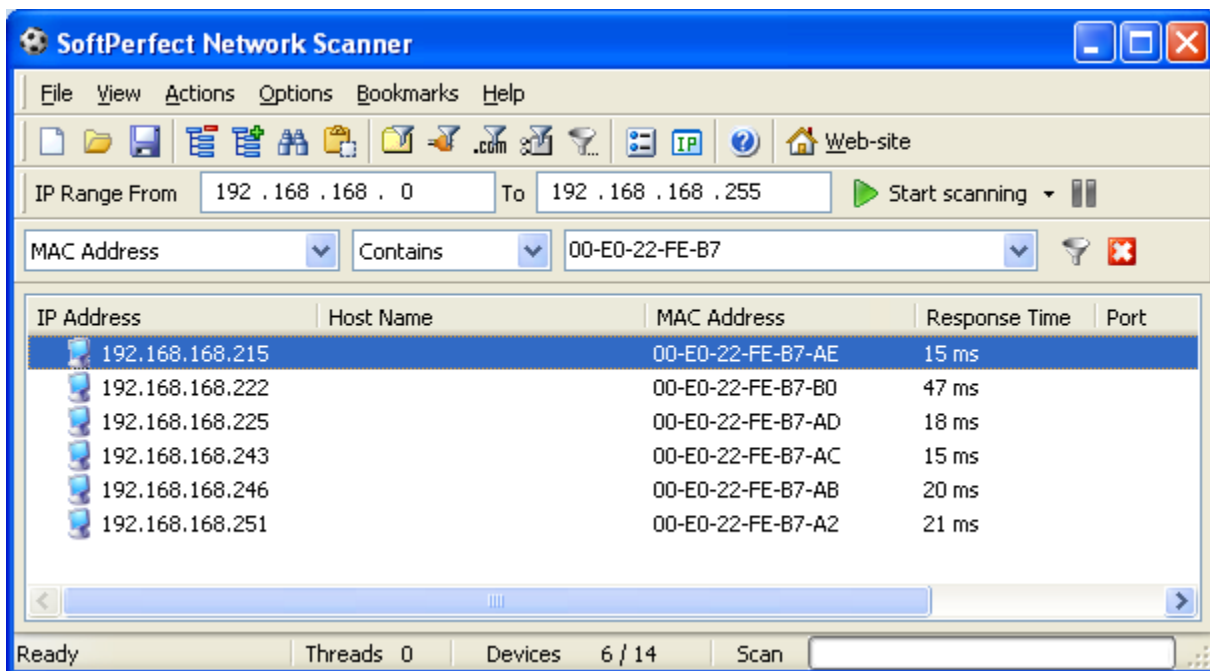


## Configuring Camelot IP cameras:

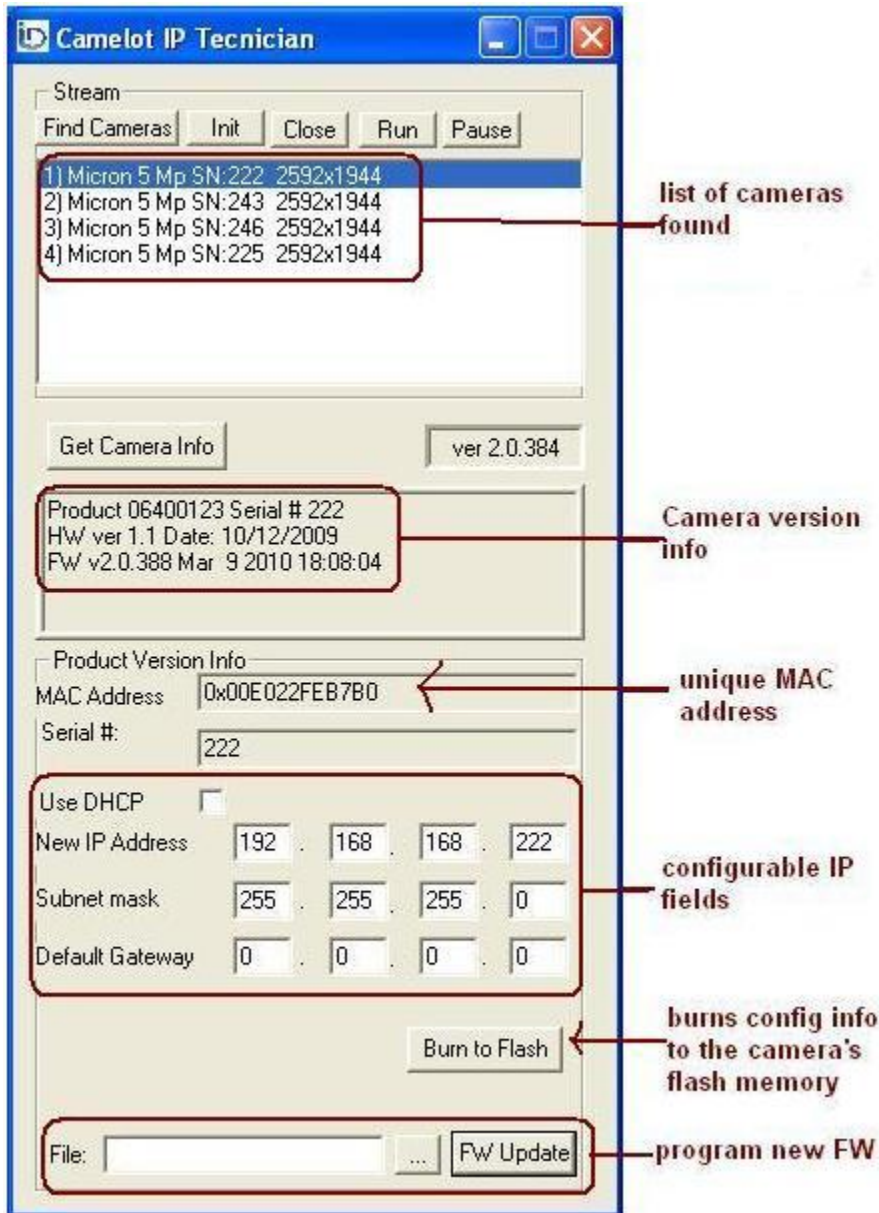
First ensure that the IP cable is firmly inserted into the camera before plugging in the electric supply.

The following files and applications are used to find and configure Camelot IP cameras:

- **Camelot.dll** – library needed for communicating with the Camelot cameras. This file should be in the same directory as **CamelotView.exe** and **IP\_TechnicianSetup.exe**
- **Netscan.exe** – a freebie program that helps to locate IP cameras on the LAN. After pressing Start scanning, use the Filter (funnel icon) to look for the MAC addresses of the cameras. The MAC address of all Camelot cameras starts with “00-E0-22-FE-B7”.



- **IP\_TechnicianSetup.exe** – program needed for configuring IP cameras.  
**Note: Cameras have the default IP of 192.168.168.253 when being shipped.**



For each camera selected in the list, the version info, MAC address and IP configuration are displayed.  
If the IP configuration is changed, the Burn to Flash button must be pressed, and then the camera must be unplugged and plugged in again.  
If using the DHCP, the Netscan program (see above) can be used to locate the camera's newly assigned IP address.