

## TN0018 - Upgrading the Camera's Firmware

---

In order to obtain the most recent firmware, FW, version (code burnt into the camera), please be in touch with our support team [support@imagine2d.com](mailto:support@imagine2d.com).

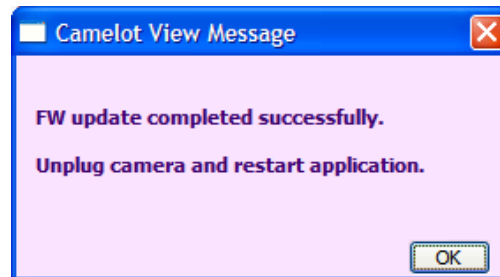
Visit our website, <http://www.imagine2d.com> to download and then install the latest version of both the software and camera drivers currently available.


### ◆ To Upgrade the Camera's Firmware:

1. Use the **current** working **CamelotView** and dll to access the camera.
2. In the Processing tab (in the Advanced options pane) browse to the new **ldr** file and click on the Update FW button.



3. This may take a while. **DO NOT UNPLUG THE CAMERA.** Unplugging the camera at this time may render it unstable.
4. After the firmware upload is successfully completed, the following MessageBox will appear:



5. Unplug the camera and close the CamelotView application.
6. Reconnect the camera then run the **CamelotView.exe** file.
7. Press the CameraInfo button (  ) and make sure that the firmware version matches the new version just uploaded (i.e. FW v2.x.xxxx).